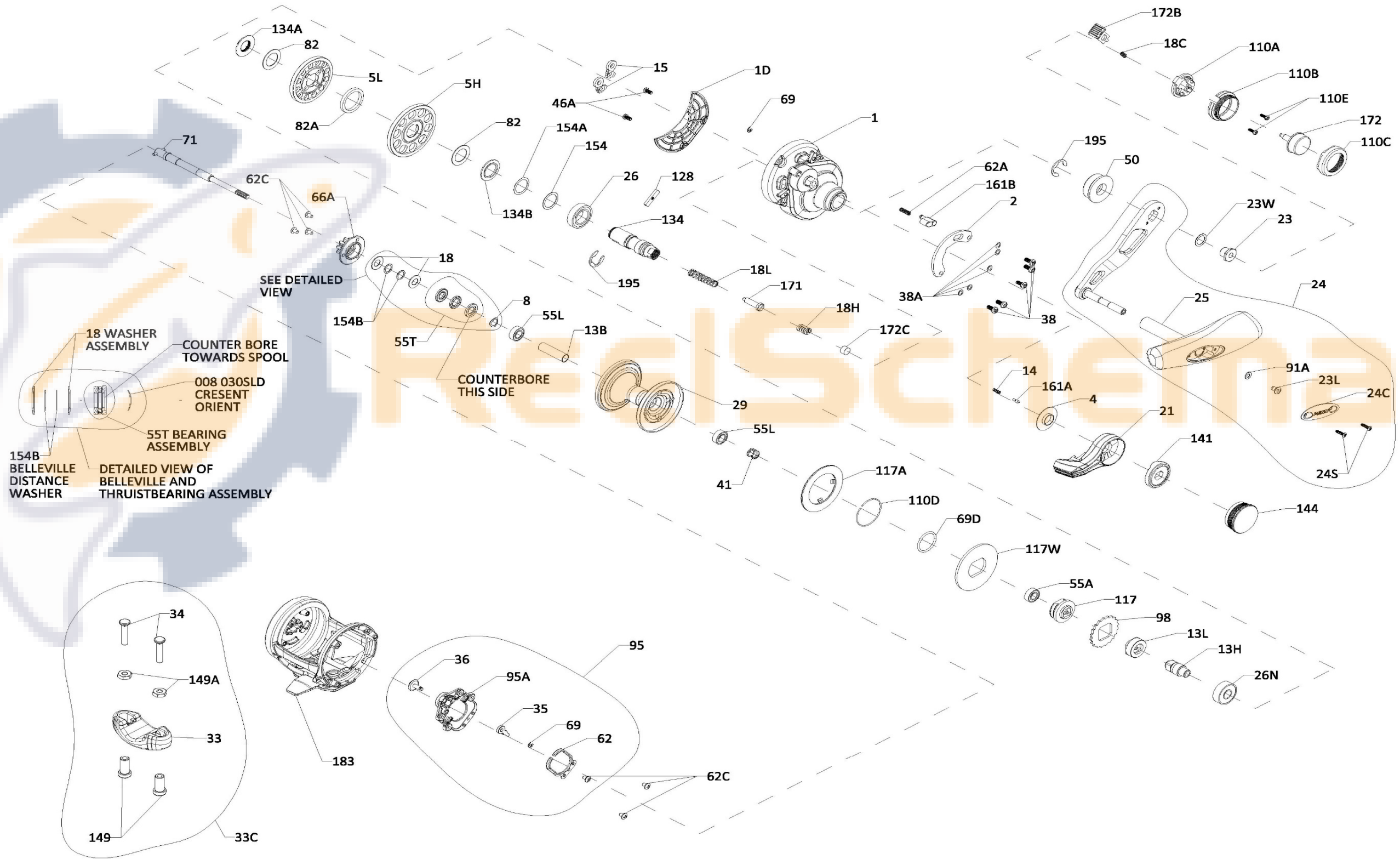




PARTS LIST FOR MODEL  
FATHOM II 10XNLD2, 15LD2  
REEL PART NO. 1563174, 1563175





PARTS LIST FOR MODEL  
 FATHOM II 10XNLD2, 15LD2  
 REEL PART NO. 1563174, 1563175

Key No.	Part No.	Penn Style No.	Description Parts List	Key No.	Part No.	Penn Style No.	Description Parts List	Key No.	Part No.	Penn Style No.	Description Parts List
1	1580131	1-FTHII10XNLD2	Right Side Plate (10XN)	29	1580209	29-FTHII10XNLD2	Spool (10XN)	98	1265072	98-FTH15LD2	Ratchet
1	1580134	1-FTHII15LD2	Right Side Plate (15)	29	1580210	29-FTHII15LD2	Spool (15)	110A	1580239	110A-FTHIILD2	Shift Button Base
1D	1580169	1D-FTHII15LD2	Gearbox Cover	33	1290729	33-TRQ	Rod Clamp (15)	110B	1580240	110B-FTHIILD2	Shift Button Body
2	1580173	2-FTHII15LD2	Quadrant	33C	1580218	33C-FTHIILD2	Rod Clamp Kit (15)	110C	1580241	110C-FTHIILD2	Shift Button Retain Ring
4	1264978	4-TRQ15LD2	Lever Washer	34	1580220	34-FTHIILD2	Screw, Rod Clamp (15) (2 req)	110D	1309895	110D-FTH15LD2	Retaining Ring
5H	1264979	5-FTH15LD2HS	Main Gear High Speed	35	1188656	35-20	Click Tongue	110E	1580242	110E-FTHIILD2	Screw (2 req)
5L	1264980	5-FTH15LD2LS	Main Gear Low Speed	36	1516151	36-FTHII15SD	Click Button	117	1309896	117-FTH15LD2	Drive Plate
8	1257843	8-30SLD	Spring Washer	38	1309885	38-FTH15LD	Screw (5 req)	117A	1309897	117A-FTH15LD2	Drag Washer (Assembly)
13B	1580185	13B-FTHII10XNLD2	Spacer Tube (10XN)	38A	1188649	38A-20	Flat Washer (5 req)	117W	1309900	117W-FTH15LD2	Drag Washer Metal
13B	1580186	13B-FTHII15LD2	Spacer Tube (15)	41	1309886	41-FTH15LD2	Drag Disengaging Spring	128	1265084	128-30SLD2	Shift Key
13H	1264991	13-FTH15LD2HS	Pinion High Speed	46A	1488755	46A-FTHII30LW	Cover Plate Screw (2 req)	134	1265085	134-30SLD2	Gear Stud
13L	1264992	13-FTH15LD2LS	Pinion Low Speed	50	1309888	50-FTH30LD2	Shield Guard	134A	1265086	134A-30SLD2	Nut Gear Stud
14	1181406	14-535	Spring	55A	1238912	55A-50SLD	Ball Bearing	134B	1265087	134B-30SLD2	Washer Support Gear Stud
15	1229374	15-TRQ40	Dog Asm (2 req)	55L	1286985	55L-20	Ball Bearing (2 req)	141	1580246	141-FTHIILD	Cam Follower
18	1265001	18-TRQ40NLD2	Spring Washer (2 req)	55T	1238913	55T-30SLD	Thrust Bearing	144	1580247	144-FTHIILD	Preset Knob Assembly
18C	1181632	18C-15KG	Spring Shift Button	62	1188664	62-20	Click Spring	149	1184702	149-45	Rod Clamp Nut (15) (2 req)
18H	1265002	18H-30SLD2	Spring	62A	1236596	62-TRQ40	Spring Click Locator	149A	1184706	149-200	Hex Nut (15) (2 req)
18L	1265003	18L-30SLD2	Spring	62C	1188654	62C-20	Screw (6 req)	154	1265092	154-TRQ40NLD2	Gear Stud Shim (As Required)
21	1580195	21-FTHII15LD2	Drag Lever	66A	1265059	66A-FTHLD	Click Gear	154A	1306668	154A-TRQ40NLD2	Gear Stud Shim (As Required)
23	1580203	23-FTHIILD2	Screw Handle Nut	69	1188657	69-20	Retainer (2 req)	154B	1309904	154B-FTH40NLD2	Belleville Distance Washer (2 req)
23L	1191283	23L-750	Screw	69D	1265060	69D-FTH15LD	Retaining Ring	161A	1265098	161A-TRQ15LD2	Lever Click Pin
23W	1286986	23W-TRQ40NLD2	Handle Nut Washer	71	1580229	71-FTHII10XNLD2	Spindle (10XN)	161B	1265099	161B-TRQ40NLD2	Strike Button
24	1580206	24-FTHII80LD2	Handle Assembly	71	1580230	71-FTHII15LD2	Spindle (15)	171	1265101	171-30SLD2	Plunger Gear Shift
24C	1361267	24C-16VIS	Cap- Handle Knob	82	1265070	82-TRQ40NLD2	Washer Teflon (2 req)	172	1580248	172-FTHIILD2	Shift Button Assembly
24S	1580207	24S-FTHII80LD2	Screw (2 req)	82A	1265071	82A-30SLD2	Washer Gear Separating	172B	1580249	172B-FTHIILD2	Shift Latch
25	1580208	25-FTHII80LD2	Handle Knob	91A	1277514	91A-TRQ40NLD2	Handle Knob Washer	172C	1184831	172B-30VS	Spacer
26	1265023	26-TRQ40NLD2	Bearing	95	1580237	95-FTHIILD2	Click Module Assembly	183	1580251	183-FTHII10XNLD2	Frame Assembly (10XN)
26N	1182145	26N-25	Bearing	95A	1580238	95A-FTHIILD2	Click Module Housing	183	1580252	183-FTHII15LD2	Frame Assembly (15)
								195	1184955	195-40	Retaining Ring (2 req)



Thank you for your recent PENN gear purchase. No matter where you fish or what you fish for, you can depend PENN to perform in any battle day in and day out. Now it's time to get your product registered and get out on the water.

<https://register.pennfishing.com>